



**Center for  
Early Relational Health**

# Endorsement Benefits

Endorsement recognizes specialized knowledge and expertise in professionals working with expecting families, babies, and young children prenatal through five and their families. It is an internationally recognized credential offered by states and countries that are part of the Alliance for the Advancement of Infant Mental Health.



## Supports You

Demonstrates your expertise in working with infants, young children and their families.



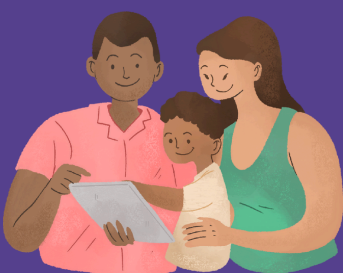
## Supports Professional Identity

Creates pathways for career growth and collaboration which can elevate professional identities and create a culture of recognition and continuous development.



## Supports Babies, Young Children, and Families

Supports babies, toddlers, preschoolers, families, and professionals in a culturally responsive, reflective and relationship-based way.



## Supports the Field

Informs professional development and career planning within an organized framework and supports a ready and responsive workforce leading to child, family, and community well-being.



## Supports Employers

Verifies that professionals have attained a specified level of expertise and understanding about the promotion of IECMH and relationship-based approaches.



## Supports Communities

Provides assurance to families, agencies, employers and the public at large that the endorsed professional meets high standards of knowledge and experience.

Connect with us to learn more at [Endorsement@CERH.org](mailto:Endorsement@CERH.org)